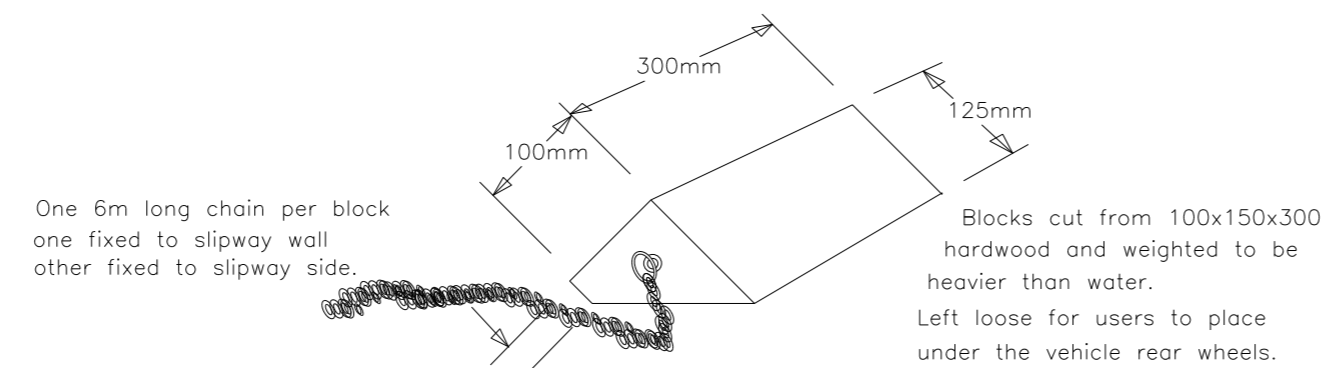
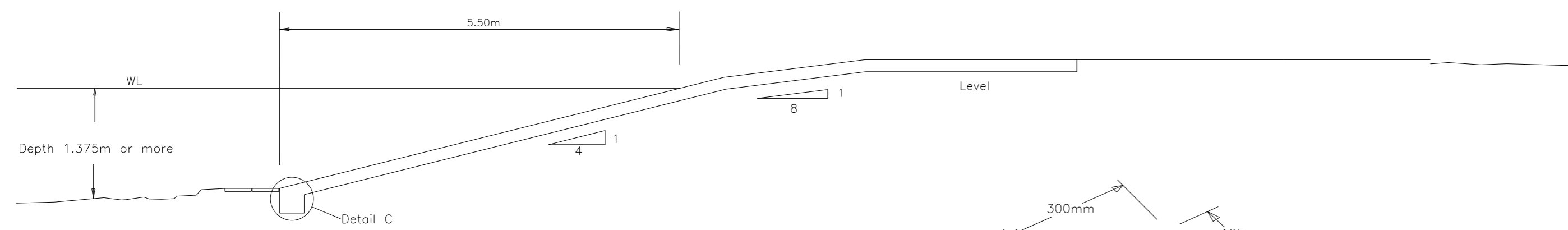
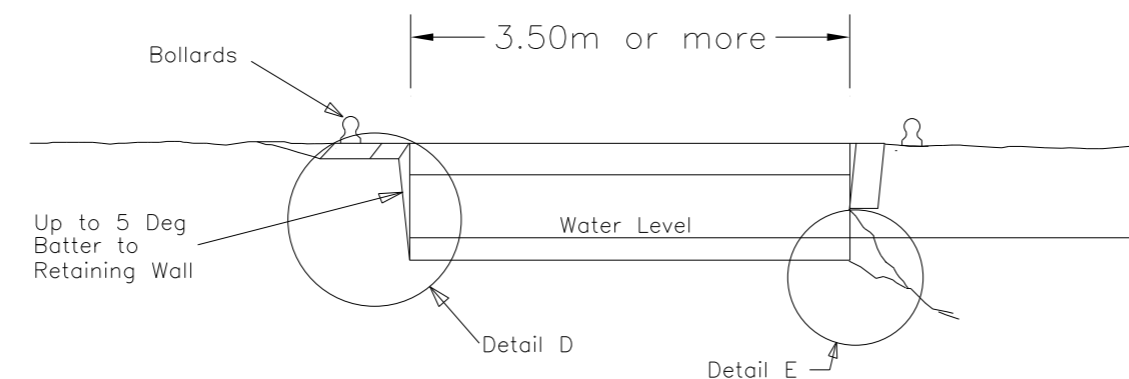


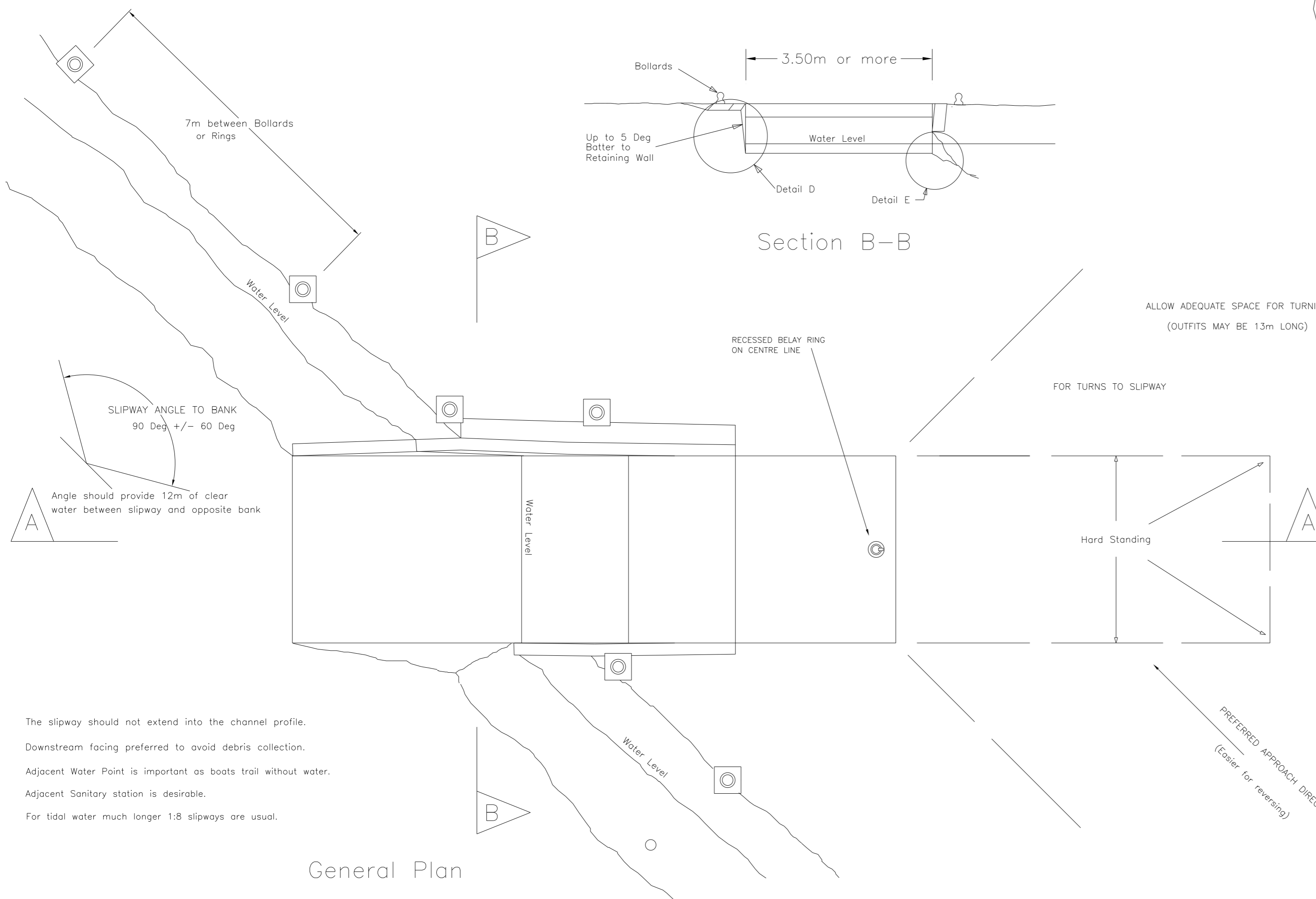
Sections A-A



Detail of Chocks (2No required)

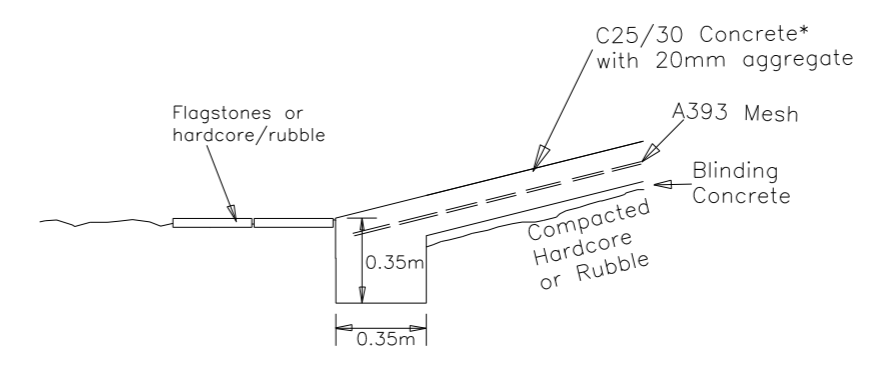


Section B-B

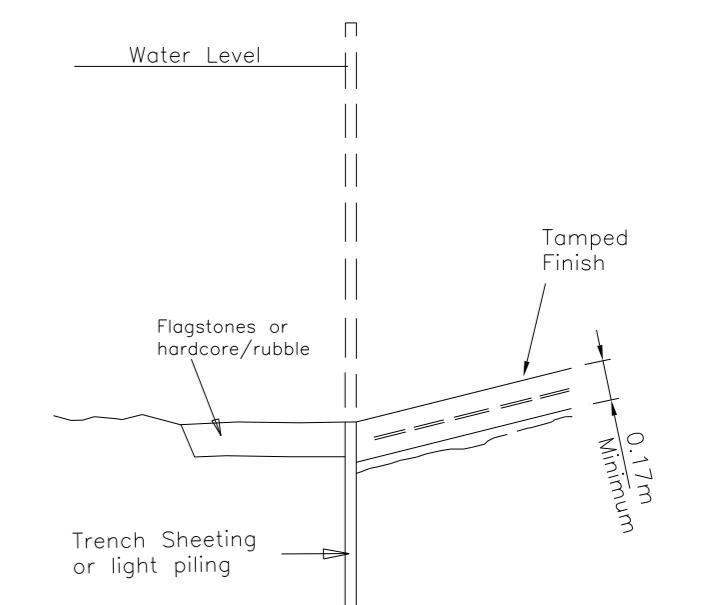


General Plan

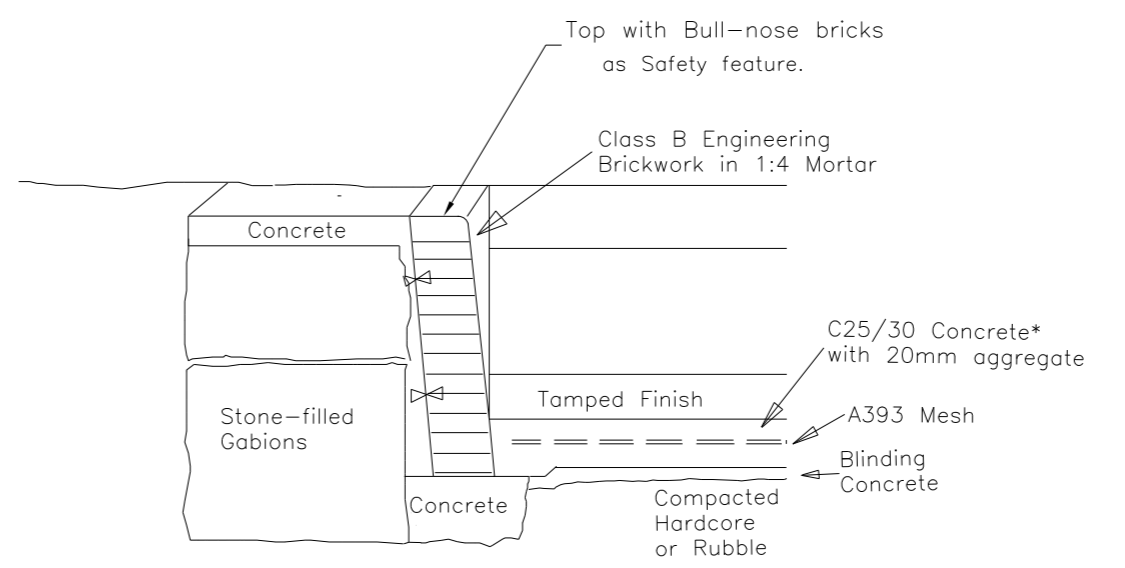
The slipway should not extend into the channel profile.
 Downstream facing preferred to avoid debris collection.
 Adjacent Water Point is important as boats trail without water.
 Adjacent Sanitary station is desirable.
 For tidal water much longer 1:8 slipways are usual.



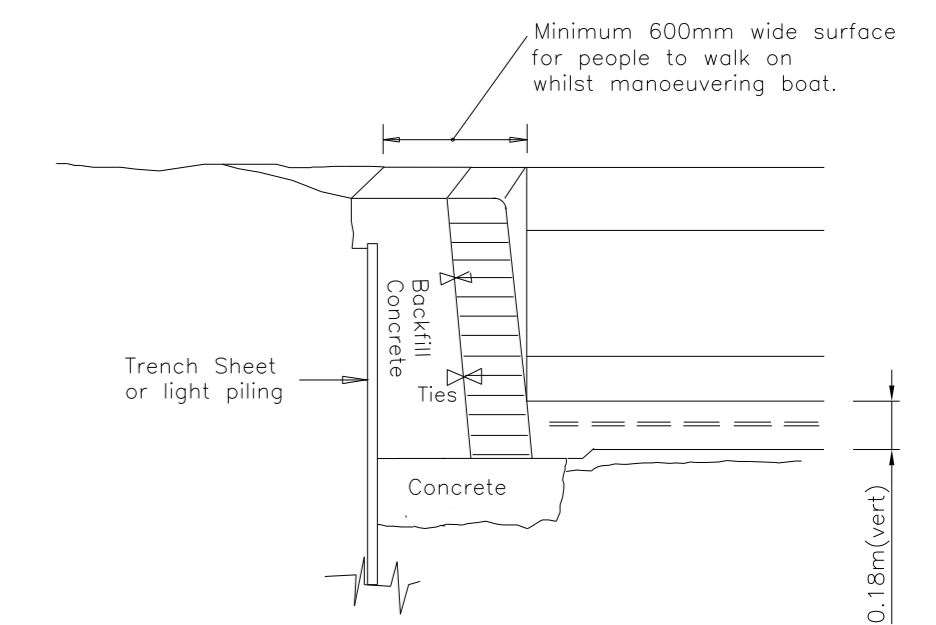
Detail C



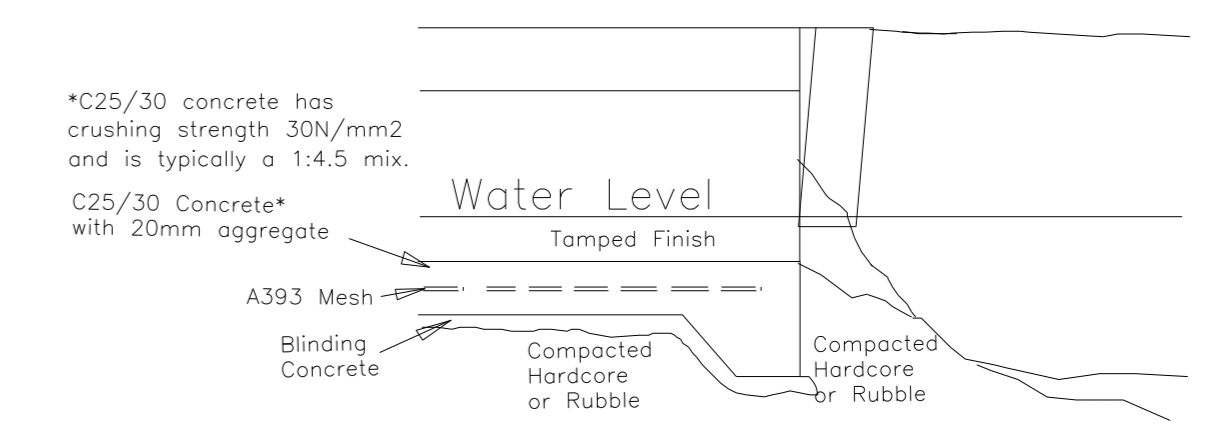
Alternative Detail C



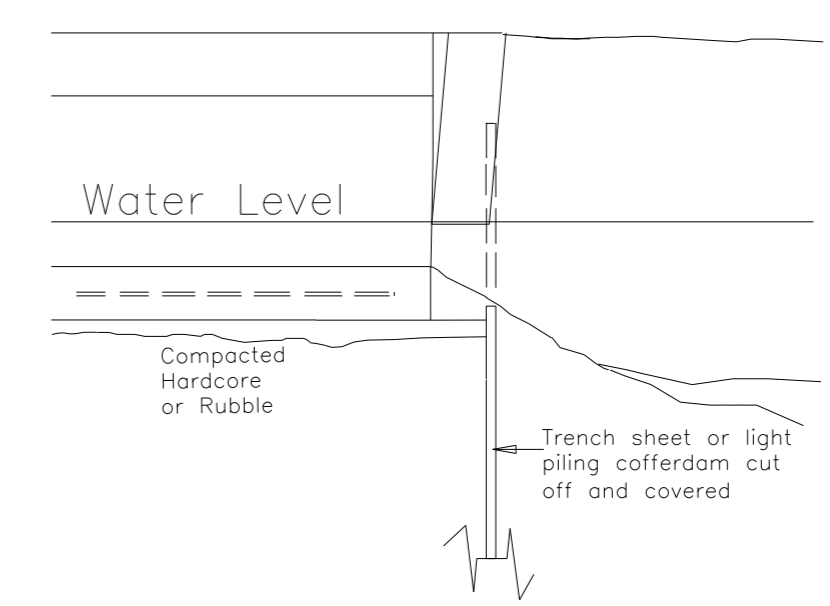
Detail D



Alternative Detail D



Detail E



Alternative Detail E

COPY
 MASTER IS ON
waterways.org.uk

Inland Waterways Association
 TITLE:
STANDARD SLIPWAY (2012)
 Based on Standard Slipway Specification, June 1990 by Ron Martin (updated)
 SCALE:
 1:100, 1:50
 ORG: R Sutton June 97
 REV: D Smith Dec 97
 REV: RDS Nov 2012