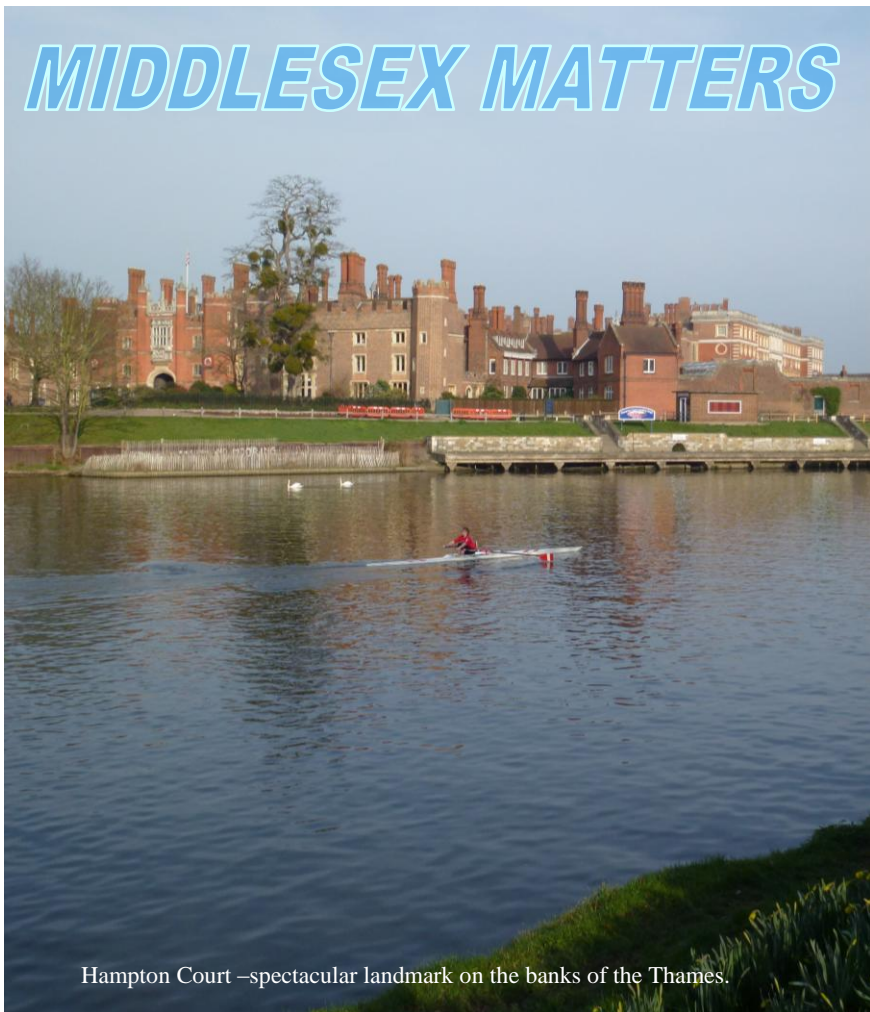


email: [middlesex.newsletter@waterways.org.uk](mailto:middlesex.newsletter@waterways.org.uk)

**No. 29 Spring 2012**

## *MIDDLESEX MATTERS*



Hampton Court –spectacular landmark on the banks of the Thames.

## *Diary Dates 2012 - social evenings*

### **8th May**

Kew Bridge Steam Museum. Ron Howes.

### **12th June**

IWA and Hillingdon Canal Club Skittles Match.

### **11th September**

Theo Thomas - The Work of Thames 21.

### **9th October**

Eileen Bowlt (Chairman of Ruislip, Northwood and Eastcote Local History Society) talking on two hundred years of Ruislip reservoir.

### **13th November**

Waterways of Bohemia and Saxony Roger Squires.

Middlesex Branch does not hold social meetings in July, August or December.

For more information contact the Social Secretary Lucy Smith on, [middlesex.socials@waterways.org.uk](mailto:middlesex.socials@waterways.org.uk) or 07947 451376.

Middlesex Branch social evenings are held at Hillingdon Canal Club, Waterloo Rd, Uxbridge.

**Entrance is free and all are welcome including non members.**

## *Festivals and events*

### **5-7th May**

IWA Canalway Cavalcade, at Little Venice. Warwick Rd tube station.

### **13th May**

Ruislip Woods Festival - 12pm - 4 30 pm free entry. At the Willow Lawn between the Lido's railway station and the Water's Edge pub. HA4 7TY.

### **19-20th May**

Rickmansworth Canal Festival, GU Canal between Batchworth and Stockers Locks and Rickmansworth Aquadrome. Not far from Rickmansworth Metropolitan Line station.

### **2-5th June**

Crick Boat Show. Crick Marina, West Haddon Rd, Crick, Northants, NN6 7SQ.

### **3rd June**

Queen's Diamond Jubilee Pageant on the Thames in London.

### **6-8th July**

Ware Boat Festival on the river Lee, Ware High Street.

### **14th July**

Hayes Carnival, Barra Hall Park, Hayes, Middlesex.

### **2nd September**

Angel Canal Festival, based around the City Road Lock, Islington, London N1.

### **8-9th September**

Slough Canal Festival, Bloom Park, Middlegreen Road, Langley, Slough.

## Chairman's Column

Spring is here at last and we can start to look forward to enjoying our canal network over the summer. This year is going to see lots of changes. Assuming that the legislation gets through parliament we can look forward to the launch of the new Canal and River Trust and the demise of British Waterways in late June. By the way, thank you to all those who lobbied their MP's over the funding for C&RT, it worked. The settlement is better than we could have hoped for. The time table for including EA in the trust still looks 50/50 for 2015 but there are clear signs that Defra wants shot of the EA Navigations.

You might have noticed that 2011 was a very dry year. In fact there was less than 70% of the national average rainfall, with the South East and the Midlands the worst affected. Last year was the driest for nearly 100 years. British Waterways are reporting that their reservoir holdings are a real concern and that the current position in the Midlands and the South East is significantly worse than in 1975/76. There key areas of concern will be familiar to you all:

- Oxford summit where there is an additional problem with Boddington reservoir caused by badger activity!
- Leicester summit.
- GU Tring summit.
- K&A.

BW are proposing that all the key lock flights in the SE region: Buckby, Braunston, Watford, Foxton, Napton, Claydon, Kilby Bridge, GU Tring and K&A summits will start the season with restricted opening times.

The Tring summit is a special problem. It was closed until 26th March. Consideration is being given to some comprehensive closure with only infrequent targeted reopening. This is already agreed for the Aylesbury Arm and is under consideration for the Northampton Arm and the northern end of the Leicester Line beyond Kilby Bridge.

There is a lot of speculation about the future of the National Festival. Can I reassure you that it is intended to hold a Festival in 2013 as promised. At the time of writing the IWA Festivals committee had started looking at possible venues. They are trying to decide what we can offer in these difficult times. The trustees are unanimous in their support for the festival.

This year's National AGM will be in the London Region at Chelmsford on the 29th September. We are going to try to do something different and make it a weekend of waterways interest. After the normal Members meeting and AGM on the Saturday we are arranging a cruise on Victoria from Paper Mill to Chelmsford on the Sunday. Transport will be arranged to get people to Paper Mill so that they can travel home from Chelmsford. There will also a chance to join Victoria's return trip on the Monday.

**Paul Strudwick**

London Region Chairman

## London Region Chairman Paul Strudwick guest speaker at the AGM

Paul Strudwick was the guest speaker at the Middlesex Branch AGM, He provided us with an insight into his role as IWA London Region Chairman and National Executive. He also gave us an update on the latest progress regarding the transfer of the British Waterways executive to the Canal and River Trust.

*Paul (left) is congratulated by Keith following his talk.*



---

## Middlesex Branch Planning and Navigation Officer

The branch committee are pleased to welcome Raymond Gill as the new Planning and Navigation Officer. Ray had been co-opted onto the committee during the year and stood for election at the AGM. He was duly elected to the Committee for a 3 year period.

---

## MIDDLESEX BRANCH SALES STAND EVENTS 2012

Branch Secretary Robin also runs the sales and information stand and attended several events throughout last year raising a very creditable sum of £485 for branch funds.

Once again for the forthcoming season Robin will be out and about with the branch sales stand visiting some of the festivals etc in and around the Middlesex area.

5 - 7 May	Canalway Cavalcade - Little Venice	
13 May	Ruislip Woods Trust Day	tbc
7 - 8 July	Ware Boat Festival - River Lea	
14 July	Hayes Carnival - Bara Hall Park	tbc
8 - 9 September	Slough Canal Festival - Bloom Park	
15 - 16 September	Hanwell Locks - Open House weekend	tbc

If you see the sales stand at one of these venues why not just introduce yourself to Robin and have a chat or even spend some time helping, you'll be most welcome.

## Camden canalside market expansion sunk

Strong objections to the market project planning application for the Hawley Wharf Market development beside the Regents Canal, won the day at the recent planning meeting in Camden. The site covers approximately 4.6 acres and was partly destroyed by a fire in 2008. The boundaries of Hawley Wharf are Chalk Farm Road, Kentish Town Road and Regents Canal



Over recent years the market has spread along the canal from Camden High Street, and the crowds of visitors and tourists spill on to the towpath which becomes impassable at times. The proposal was criticised for not respecting the history of the canalside site and ignored Camden Town's unique character. Other flaws in the application included the oversize of the buildings, the lack of affordable housing and absence of facilities for the locals, and more.

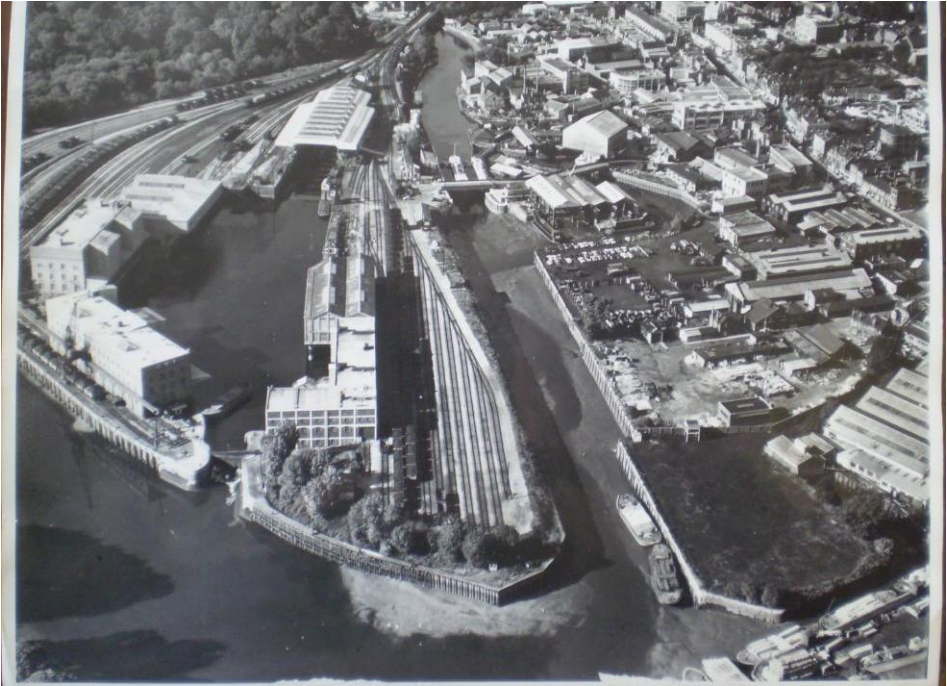
---

## Accused of Southall GU Canal killing

A man accused of murdering his girlfriend and dumping her body in the Grand Union Canal has appeared at the Old Bailey. The body of 23-year-old Ruby Love from Harrow was found floating in the Grand Union Canal in Southall, on the morning of Christmas Day, 2011. An initial post-mortem

examination failed to find a cause of death, but further tests suggest she had been strangled. Appearing via video-link from Belmarsh prison, Manzar Juma, 28 of Hexham Gardens Northolt, spoke only to confirm his identity during a brief hearing at the Old Bailey on 5 April 2012.

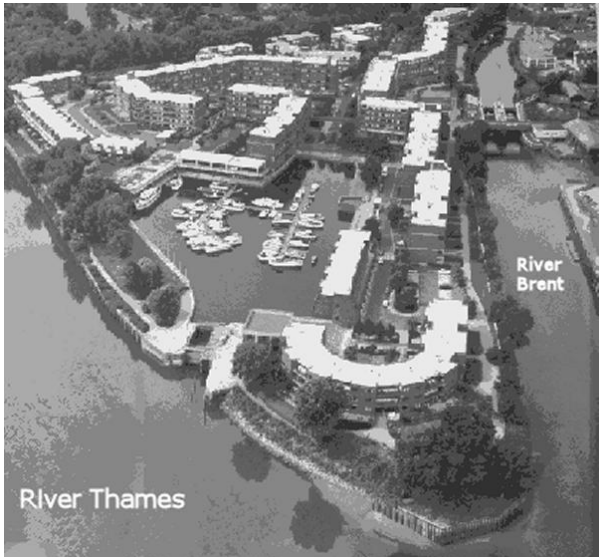
# Brentford Dock from the past to the present



*Top picture:* Brentford docks taken during the 1960's.

*Below right:* The same area after redevelopment in the '70's.

*Below:* David Bright gave us an excellent armchair tour of Brentford at the April social evening.



## Pictures from in and around the Branch area



Gallows Bridge on the Grand Union near Boston Manor station, Brentford.



The elegant curves of The Grove Bridge on the Grand Union near Watford.

## Paddington floating restaurant application sinks

Westminster Council has refused an application for a floating boat/restaurant to be moored on the canal side within Baltic Wharf and adjacent to Sheldon Square in Paddington Basin.

The application was for a restaurant barge in Paddington basin having two floors and a modern large awning extending over

the edge of the basin for a further 40 customers. The mooring shown in the application is in front of Starbucks and Zizi's restaurant, probably not the best of views if you're dining outside.

The application can be seen on Westminster's site using application number 10/10159



**London's premier waterway event**

# **CANALWAY CAVALCADE**

## **2012**

**5th – 7th May 2012 at  
Little Venice, London**

**Free entrance**

**Just a short walk from  
Warwick Avenue (Bakerloo line underground)  
or Paddington station.**

**Canalway Cavalcade combines a boat rally with a  
trade show and a wide range of entertainments.**



## Washing boats and the hosepipe ban

It would appear that the washing of private and commercial boats for health and safety reasons is exempt at this stage of the drought.

Health and safety reasons in this context include removing or minimising any risk to human or animal health or safety and preventing or controlling the spread of causative agents of disease.

The government recognises the importance of washing down boats to

minimise the spread of invasive non native species. However, both the federation and Water UK recommend that anyone using mains water to wash down their boat under the above conditions should carry out an internal health and safety audit, demonstrating that every consideration has been made to minimise the amount of water used when washing down boats.

---

## Water shortage impacts on canal water levels

The well publicised water shortage has caused serious restriction on the canal navigations, mainly in the southern half of the country. The Leicester Section of the Grand Union Canal was closed to boating from the middle of March for the foreseeable future due to lack of water. Friday the 13th was indeed unlucky for any boater wanting to cruise the main waterway artery between the North and the South of the country, for on Friday locks 18, 30 and 38 were chained-up, stopping any navigation between Kibworth Top Lock (18) and Kings Lock (38).

The route from North to South via the Oxford Canal is also suffering water shortages with restricted opening of the Napton locks. The Northampton Arm is also closed, so there is no access to or from the Nene, Middle Level or River Great Ouse.

It is believed that some owners of boats invited to attend the Queen's Jubilee procession on the Thames are having to arrange for their boats to be transported by lorry, as there is simply no way to get there by water.

Rainfall measured at Heathrow

	2009-10	2010-2011	2011-2012
<b>October</b>	39.4	74.8	18.4
<b>November</b>	148.0	32.2	29.0
<b>December</b>	84.6	21.4	63.0
<b>January</b>	51.3	76.8	34.4
<b>February</b>	100.4	42.8	16.8
<b>March</b>	39.8	14.2	16.2
<b>TOTAL</b>	463.5	262.2	177.8

The figures show the low rainfall in the region during 2010-2012.

## MIDDLESEX MUSINGS



### Lead balloon or what?

The news by British Waterways that it has purchased 29,460 balloons went down like a lead balloon in some circles. It wasn't helped by the purchase of 48,750 metres of bunting and 25,000 stickers. All this for the launch of Canal & River Trust is causing comments about its sheer waste.

### Camden canal development

The planning application for Hawley Wharf Market development beside the Regents Canal as reported on page 5 was originally rejected by Camden Council.

However, that might not be the end of it.

The Mayor of London could push through the multi-million pound redevelopment of Hawley Wharf and Camden market - despite the plans being rejected by Camden councillors.

The Mayor has the power to overturn a planning decision if he believes it will affect the overall strategic plan for London.

Personally I love Camden Market, insane and bursting at the seams, its overcrowded nature on and around the canal towpath. Who would want to change this for an IKEA type canal side development at Camden?

### BW handover to C&RT or WIT?

On the subject of the British Waterways handover to Canal & River Trust a recent publication from the House of Commons is the Corrected Transcript of Oral Evidence published as HC 1890-i.

This refers to evidence taken before the Environment, Food and Rural Affairs Committee. At the meeting were Clive Henderson, Chairman of the IWA and Howard Pridding, Executive Director of British Marine Federation.

### Trusts within trusts

From the discussions about the transfer of British Waterways to the Canal & River Trust John Kittmer, Deputy Director for Inland Waterways at Defra stated:-

*'There are two forms of assets that we are transferring. The network itself, the core infrastructure, will be transferred subject to trust. We are creating a trust-again, we have let you have a draft of the trust settlement-called the Waterways Infrastructure Trust, which will hold all the core network assets that make the network work: not just the water and towpaths but also the pumping stations, the reservoirs and so on.'*

It would appear the Canal & River Trust will become the trustee of the Waterways Infrastructure Trust.

It looks like layers of bureaucracy are being established before we even begin.

I wonder if we'll ever find out who's actually going to be running the canal system.

Corrected transcript of oral evidence  
<http://www.publications.parliament.uk/pa/cm201012/cmselect/cmenvfru/c1890-i/c189001.htm>

**Terry Liddle**  
Editor.

AND *almost* FINALLY

Dates for committee meetings for 2012 are given below. Members are welcome to attend. Meetings start at 8.00pm at the Hillingdon Canal Club, Waterloo Road, Uxbridge UB8 2QX.

24 Jan	27Mar	22 May
16 Jul	25 Sept	27 Nov

## YOUR BRANCH COMMITTEE

Chairman	<b>Keith Clayton</b>	020 8573 0883 keith_clayton_1955@yahoo.co.uk
Secretary	<b>Robin Bishop</b>	020 8452 2632 robinebishop@tiscali.co.uk
Treasurer	<b>Lucy Smith</b>	middlesex.treasurer@waterways.org.uk
Panning/Navigation	<b>Raymond Gill</b>	07785886255 raycgill@hotmail.com>;
Membership	<b>Keith Clayton</b>	020 8573 0883 keith_clayton_1955@yahoo.co.uk
Sales	<b>Robin Bishop</b>	020 8452 2632 robinebishop@tiscali.co.uk
Social meetings	<b>Lucy Smith</b>	middlesex.socials@waterways.org.uk
Newsletter	<b>Terry Liddle</b>	020 8863 2551 middlesex.newsletter@waterways.org.uk
Publicity	<b>Mike Timms</b>	01753 651975
Other members	<b>Stephen Bray Michael Phillips</b>	

The newsletter welcomes communications from readers. If you have a point to make, a question to ask, or an interesting picture or article worthy of publication send it to us at

Middlesex Matters,  
39 Hillview Gardens,  
Harrow, Middlesex HA2 6HJ

Email to: [middlesex.newsletter@waterways.org.uk](mailto:middlesex.newsletter@waterways.org.uk).

NEWSLETTER EDITOR Terry Liddle

Middlesex Matters is produced using MS Word 2007.  
The next publication will be the autumn 2012 edition, issue number 30.

The views expressed in this Newsletter are not necessarily those of the Inland Waterways Association or of its London Region or of its Middlesex Branch. They are however published as being of interest to our members and readers

© IWA Middlesex Branch 2012

The Inland Waterways Association is a charity campaigning for the conservation, use, maintenance, restoration and development of the inland waterways and is a non profit distributing company limited by guarantee registered in England number 612245 registered as a charity number 212342 whose registered office is at:

Island House, Moor Road, Chesham. HP5 1WA.  
Tel. 01494 783453  
<http://www.waterways.org.uk>

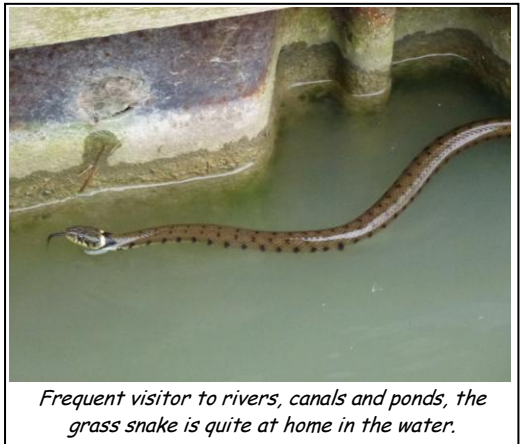


*Daffodils in the gardens of Hampton Court Palace*

**Did you know?**

THERE'S a boater at the Hillingdon Canal Club they call the Skipper, but not because of his boating knowledge - it's because of how many payments he's missed on his boat.

THERE'S another boater always leaving his boat on the trailer, makes launching a lot faster, though. He'd just back up to the boat ramp, unhitch the trailer, and the whole thing rolls right into the water. Why not? Once you're in the water, nobody can tell there's a trailer under your boat anyway.



*Frequent visitor to rivers, canals and ponds, the grass snake is quite at home in the water.*

REMEMBER, the first rule of boating safety - stay away from water.

Why not just leave your boat on the driveway, after all, the main reason to own a boat is to let everybody know you've got credit.

And finally, whenever doing a job on the water, always stay on top of it.